

Maxton

Acrylic Bath

Nominal Sizes: 1525mm x 735mm x 438mm
1675mm x 735mm x 438mm
1795mm x 780mm x 480mm

9.06.1



Maxton

Acrylic Bath

1525mm x 735mm x 438mm

1675mm x 735mm x 438mm

1795mm x 780mm x 480mm

A fresh, simple, contemporary design with integrated armrests for added comfort. Complete with a four tile flange for built-in installation.

Bath also available as spa baths in Immerse and Revive configurations.

1525mm long x 735mm wide x 438mm deep - Standard Code No.MX5

1675mm long x 735mm wide x 438mm deep - Standard Code No.MX7

1795mm long x 780mm wide x 480mm deep - Standard Code No.MX8

Durability: Sanitaryware grade acrylic resists chipping, will not rust and has excellent heat retention properties. Its high gloss finish has natural slip resistance. Minor scratch marks can be removed with gentle metal polishes, such as Brasso.

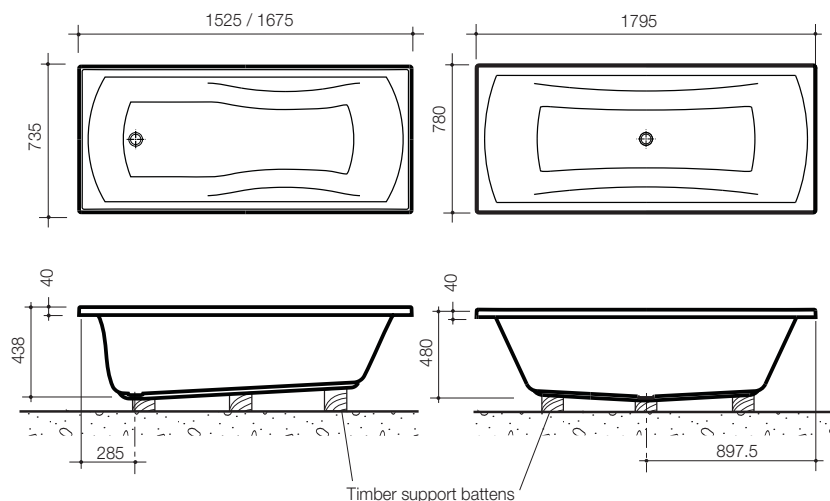
Waste Outlet: Waste outlet is suitable for 40mm diameter standard waste assembly.

Bath Capacity: Maxton 1525 - 230 litres; Maxton 1675 - 260 litres; Maxton 1795 - 330 litres.

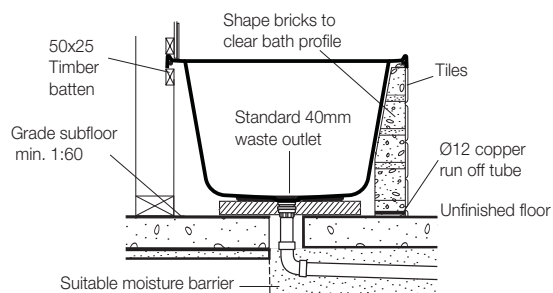
Installation: The bath is suitable for both built-in and island installations. The bath is supported around its rim and the base is supported with timber base supports. Refer to Sheet 9.20.1 for further installation information.

Colour: White only.

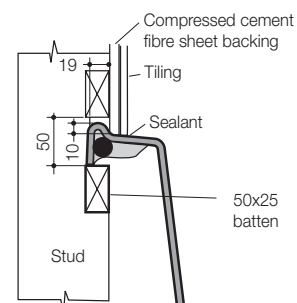
Dimensions: All dimensions are in millimetres and are subject to normal manufacturing variations. Caroma pursues a policy of continuing improvement in design and performance of its products. The right is therefore reserved to vary specifications without notice.



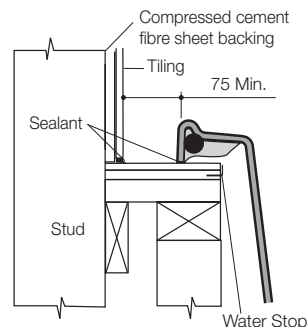
On the indicator lines, position and fix timber supports to base of the bath and floor with an approved floor and wall panelling adhesive or equivalent adhesive to provide a neat fit support. Ensure the rim of the bath is levelled during this procedure.



BUILT-IN INSTALLATION



ISLAND INSTALLATION



*** IMPORTANT:**
Refer to Local Authority for minimum setout from wall

TIMBER SUPPORT ALTERNATIVE

Bond inner face of bath to timber frame as detailed with approved floor and wall panelling adhesive

